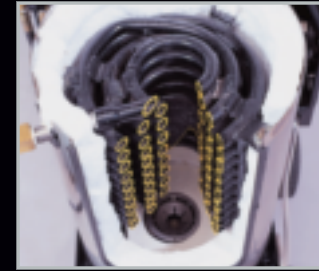




Fuel Tank & Control Panel:
Corrosion proof polyethylene fuel tank and conveniently located control panel with easy to use controls.



GFCI Protection:
Ground fault circuit interruption is standard on the full line of Aaladin portable pressure washers.



Insulation System:
Innovative insulation system designed for greater efficiency and easier serviceability.



Manifold Plumbing Assembly:
The plumbing assembly utilizes quick couple connections allowing for easier and quicker service of the pump module.



Brake Assembly:
Two wheel locking brake assembly. Correctly conforms to ETL Listing requirements.



Hose Reel Bracket:
Hose reel socket incorporated directly to frame assembly for maximum support.

12 

**SERIES: ED, ES & EL
PORTABLE PRESSURE WASHERS**

Aaladin
CLEANING SYSTEMS

Aaladin
CLEANING SYSTEMS

MEMBER OF
CETA

SOUTHEAST INTERSECTION, 1-29 EXIT 15
32584 477TH AVE., ELK POINT, SD 57025
PHONE: 605-356-3325 FAX: 605-356-2330
1-800-356-3325
WWW.AALADIN.COM

Distributed By:

Industrial Equipment
830 Cherry Street
Chico, CA 95928
(800) 287-8306

Part No. 26-505710-2
11/05

AA
always Aaladin



< 12 Series - ED Model

12-212D ED 12-320D ED 12-203D ED 12-210CD ED

Features:

- * Direct Drive Pump
- * Industrial High Efficiency Electric Motor
- * High Limit Temp Control
- * Heavy Duty Electro Plated Fittings
- * Welded Heavy Duty 1 1/4" OD Steel Tube Frame
- * Built-In Hose Reel Socket
- * Durable Powder Coated Automotive Quality Paint Finish
- * Pneumatic Tires on Dish Wheels
- * Painted Steel Wrapper
- * Extremely Efficient Heat Chamber Design
- * Exclusive Combustion Chamber Insulation System
- * Heating Coil Constructed of ASTM A53 Schedule 80 Steel Pipe
- * Corrosion Proof Molded Polyethylene Fuel Tank
- * Quick Coil Access
- * High Efficiency Beckett Burner
- * Fuel Oil Solenoid
- * In-line Fuel Filter
- * Trigger Gun Control
- * 36" Insulated Wand
- * Flood Nozzle w/Fixed 15° Spray Tip (Except 12-203 ED & 12-210C ED)
- * 3/8" x 40' High pressure Hose Assembly w/Safety Hose Guards
- * Four Wheel Design
- * GFCI Protection w/10' Electrical Cord
- * Flexible Vinyl Poly Coated Tri-Lingual Decals



< 12 Series - EL Model

12-216 EL 12-310 EL 12-325 EL 12-423 EL 12-430 EL

Includes All Features of ED & ES Plus:

- * Stainless Steel Belt Guard
- * Stainless Steel Electrical Control Panel
- * Stainless Steel Wrapper
- * Water Separating Fuel Filter
- * In-Line Fuel Shutoff
- * 3/8" x 50' High Pressure Hose Assembly w/Safety Hose Guards
- * GFCI Protection w/36' Electrical Cord (Model 12-430 EL 40 Amp Unit Comes Standard w/10' Electrical Cord)
- * Accessory Package (Consists of One Cord Hanger, Hose Hanger and Gun Rack)

Dealer Installed Optional Equipment – All Models:

- * Accessory Package (Standard on EL Series, Consists of One Cord Hanger, Hose Hanger, and Gun Rack)
- * Mag Style Wheels
- * Hose Reel
- * Two Wheel Brake Assembly



12 Series - ES Model >

12-216 ES 12-310 ES 12-325 ES 12-423 ES 12-430 ES

Includes All Features of ED Plus:

- * Belt Driven Pump
- * Exclusive High Strength Plastic Manifold
- * Quick Couple Manifold Plumbing Connections
- * Corrosion Proof Polyethylene Float Tank w/Chemical Metering
- * 0° & 15° Quick Couple Nozzles



MODEL	12-212D	12-320D	12-203D	12-210CD	12-216	12-310	12-325	12-423	12-430
AVAILABILITY	ED	ED	ED	ED	ES-EL	ES-EL	ES-EL	ES-EL	ES-EL
FLOW OUTPUT (GPM)	2	3	2.2	2.2	2	3	3	4	4
PRESSURE RATINGS (PSI)	1200	2000	300	1000	1600	1000	2500	2300	3000
MAX OUTPUT TEMPERATURE	175°	175°	300°	200° 300°	175°	175°	175°	180°	180°
CLEANING COMPARISON INDEX (1)	6074	11763	4263	6436/7783	7014	8317	13151	17005	19421
MOTOR HORSEPOWER	2	4	.75	1.5	2.3	2.3	5	6	8
ELECTRICAL REQUIREMENTS									
VOLT	115	230	115	115	115	115	230	230	230
AMP	20	20	15	20	20	20	20	30	40
PHASE	1	1	1	1	1	1	1	1	1
OIL FIRED BURNER SYSTEM									
INPUT BTU'S	179,000	274,000	383,000	383,000	179,000	274,000	274,000	366,000	366,000
FUEL CONSUMPTION (GPH) (2)	0.77	1.18	1.65	1.65	0.77	1.18	1.18	1.57	1.57
BURNER FUEL TANK CAPACITY	7.4	7.4	10.4	10.4	7.4	7.4	7.4	10.4	10.4
STACK SIZE	7"	7"	8"	8"	7"	7"	7"	8"	8"
DIMENSIONS									
LENGTH	31.5"	31.5"	37.5"	37.5"	31.5"	31.5"	31.5"	37.5"	37.5"
WIDTH	24.5"	24.5"	29"	29"	24.5"	24.5"	24.5"	29"	29"
HEIGHT	39"	39"	44.5"	44.5"	39"	39"	39"	44.5"	44.5"
APPROXIMATE WEIGHT (LBS)	290	320	380	415	310	310	325	465	485

(1) Cleaning Comparison Index - This index is used in the comparison of pressure washing equipment by taking into account the cleaning effects of water pressure, flow, and temperature on cleaning time. The larger the cleaning comparison index, the faster the pressure washer will clean. The formula is GPM x 60 x $\sqrt{\text{PSI} \times [1 + (\text{TEMP} - 32^\circ) / 310]}$.

(2) Fuel Consumption considers an operating duty cycle of 60%.